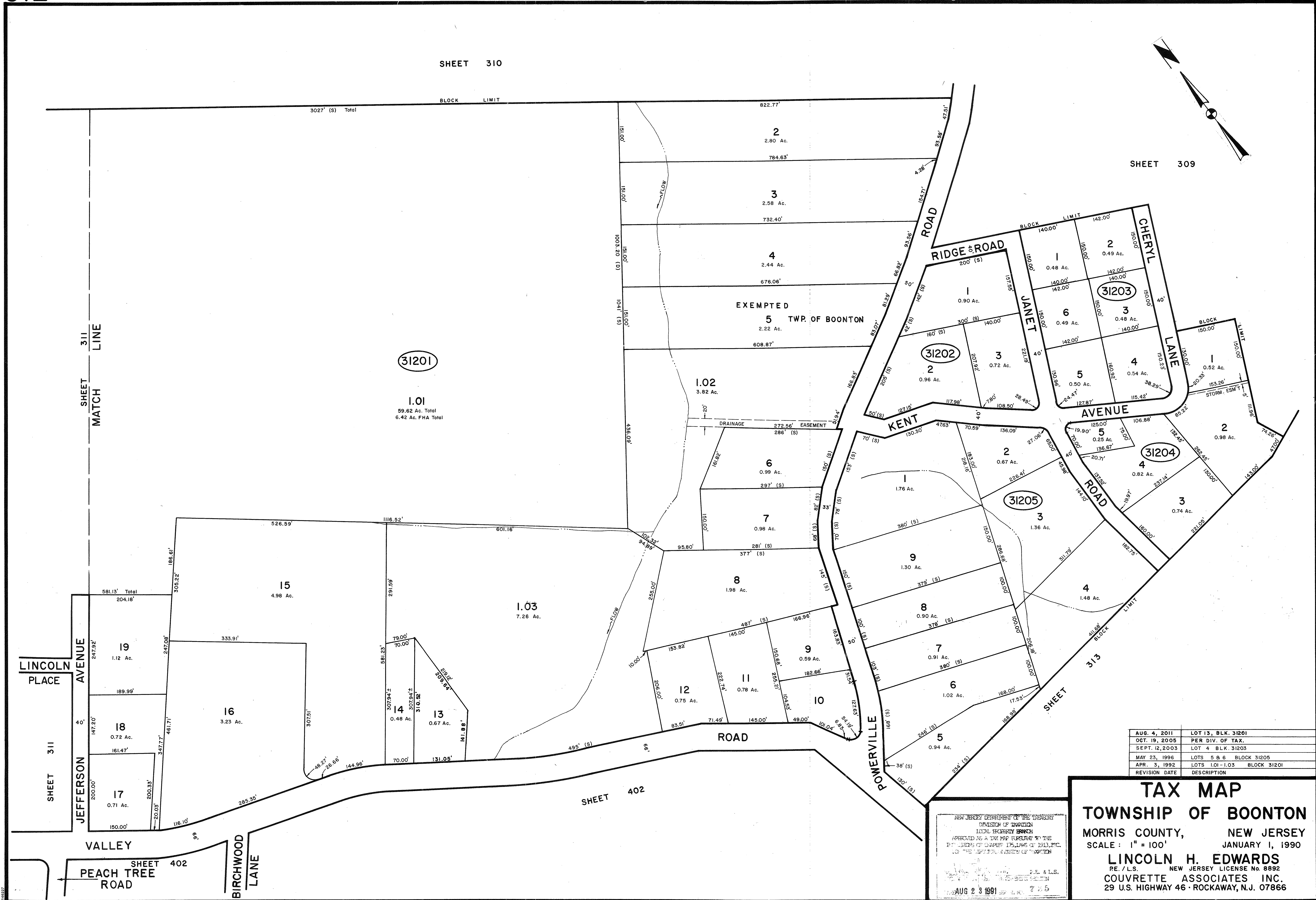
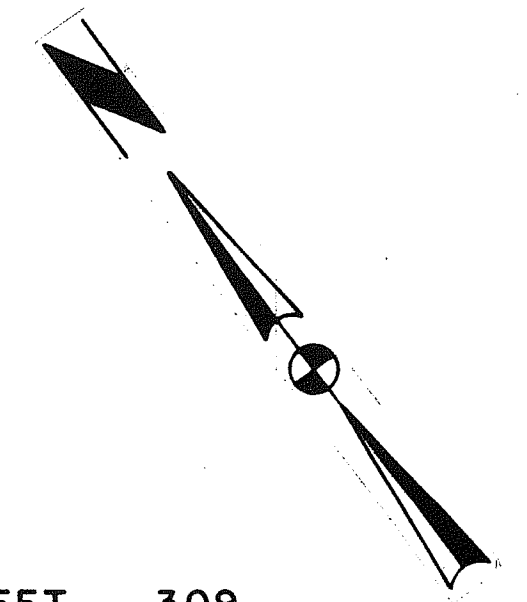


SHEET 310

SHEET 309



31201  
1.01  
59.62 Ac. Total  
6.42 Ac. FHA Total

EXEMPTED  
5  
TWP. OF BOONTON  
2.22 Ac.  
608.87'

1.02  
3.82 Ac.

1.03  
7.26 Ac.

REVISION DATE	DESCRIPTION
AUG. 4, 2011	LOT 13, BLK. 31201
OCT. 19, 2005	PER DIV. OF TAX.
SEPT. 12, 2003	LOT 4 BLK. 31203
MAY 23, 1996	LOTS 5 & 6 BLOCK 31205
APR. 3, 1992	LOTS 1.01-1.03 BLOCK 31201

NEW JERSEY DEPARTMENT OF THE TREASURY  
DIVISION OF TAXATION  
LOCAL TAXMAPS BRANCH  
APPROVED AS A TAX MAP FOR THE  
TOWNSHIP OF BOONTON, NEW JERSEY  
ON THE 12TH DAY OF AUGUST 1991  
BY: [Signature]  
S.E. & L.S.  
AUG 23 1991

**TAX MAP**  
**TOWNSHIP OF BOONTON**  
MORRIS COUNTY, NEW JERSEY  
SCALE: 1" = 100'  
JANUARY 1, 1990  
**LINCOLN H. EDWARDS**  
P.E. / L.S. NEW JERSEY LICENSE No. 8892  
**COUVRETTE ASSOCIATES INC.**  
29 U.S. HIGHWAY 46 - ROCKAWAY, N.J. 07866